



AcuHand System

By Medentex LLC

Topics



- Manual Dexterity
- Educational Applications
- Problems faced in a clinical situation
- Technical description of the AcuHand system
- The many solutions AcuHand will provide
- Examples of preparations made with the AcuHand System

Limits of Manual Dexterity



- Problems of hand-eye coordination
- Inability to test and quantify precision and accuracy for aspiring dentists
- Factors that hinder precision in a clinical situation
- Realizing our limits

Educational Applications



- Testing and screening potential dental students
- Teaching and controlling the progress of learning skills
- Producing the most qualified dentists
- Continuously improving the skills of practicing doctors

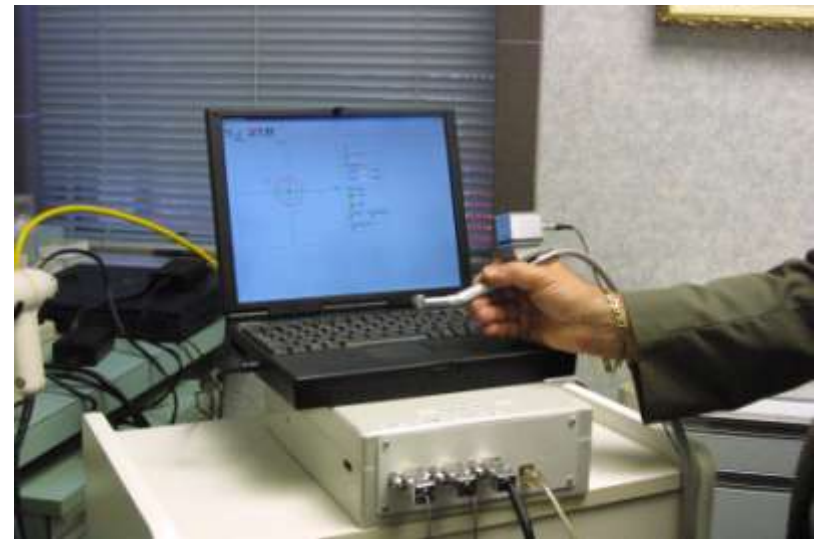


Problems faced in a clinical situation

- The unnecessary removal of sound tooth structure
- Lack of retention in crowns and bridges
- Exaggerated reliance on cements and bonding materials to hold restorations due to inaccurate preparation
- Overall quality
- Long term consequences to the patient

AcuHand System

- 3 dimensional positioning sensors based on the most modern solid state electronics
- Measures and registers angles and allows for adjustable tolerance
- Automatically stops drilling when the tolerance is violated

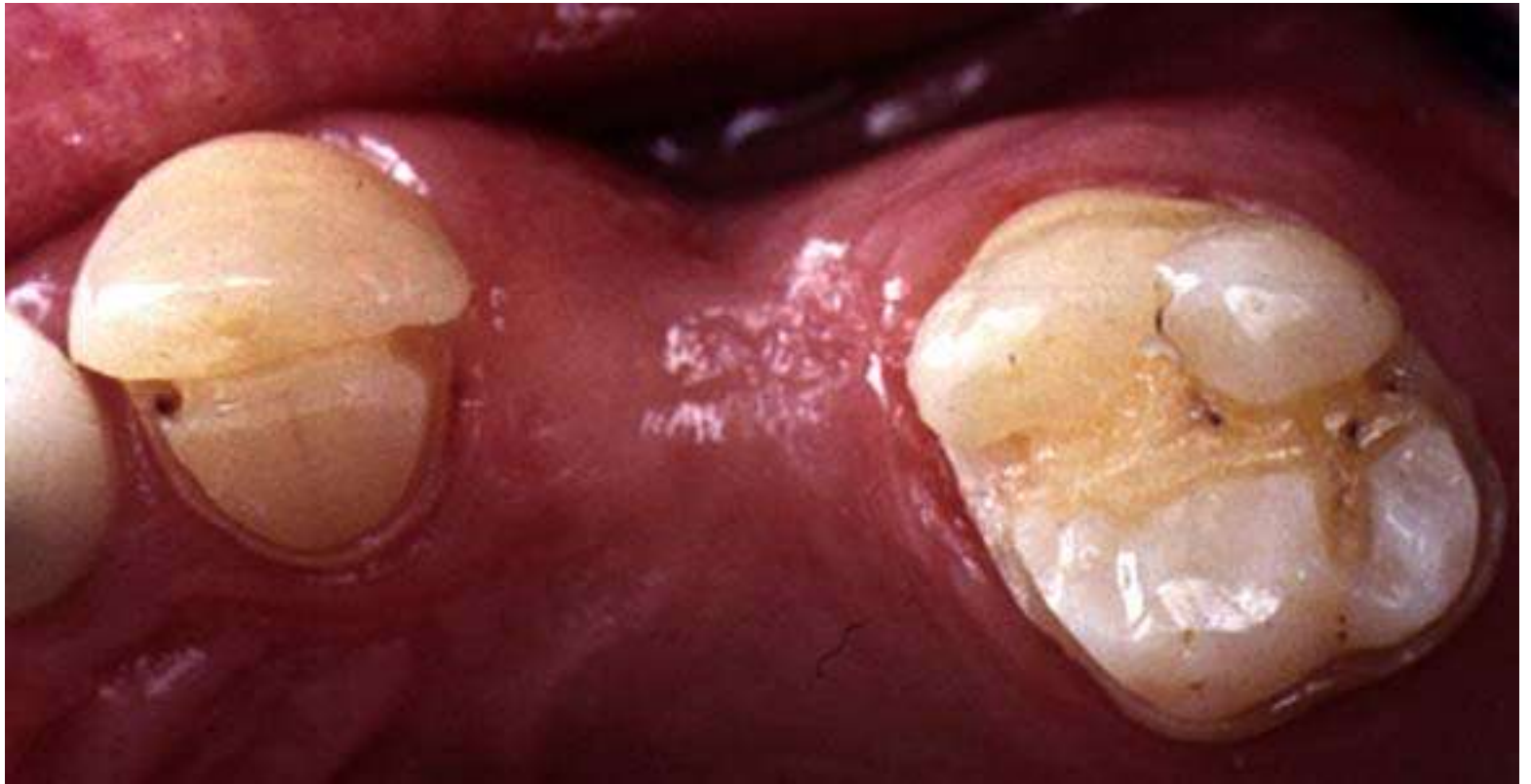




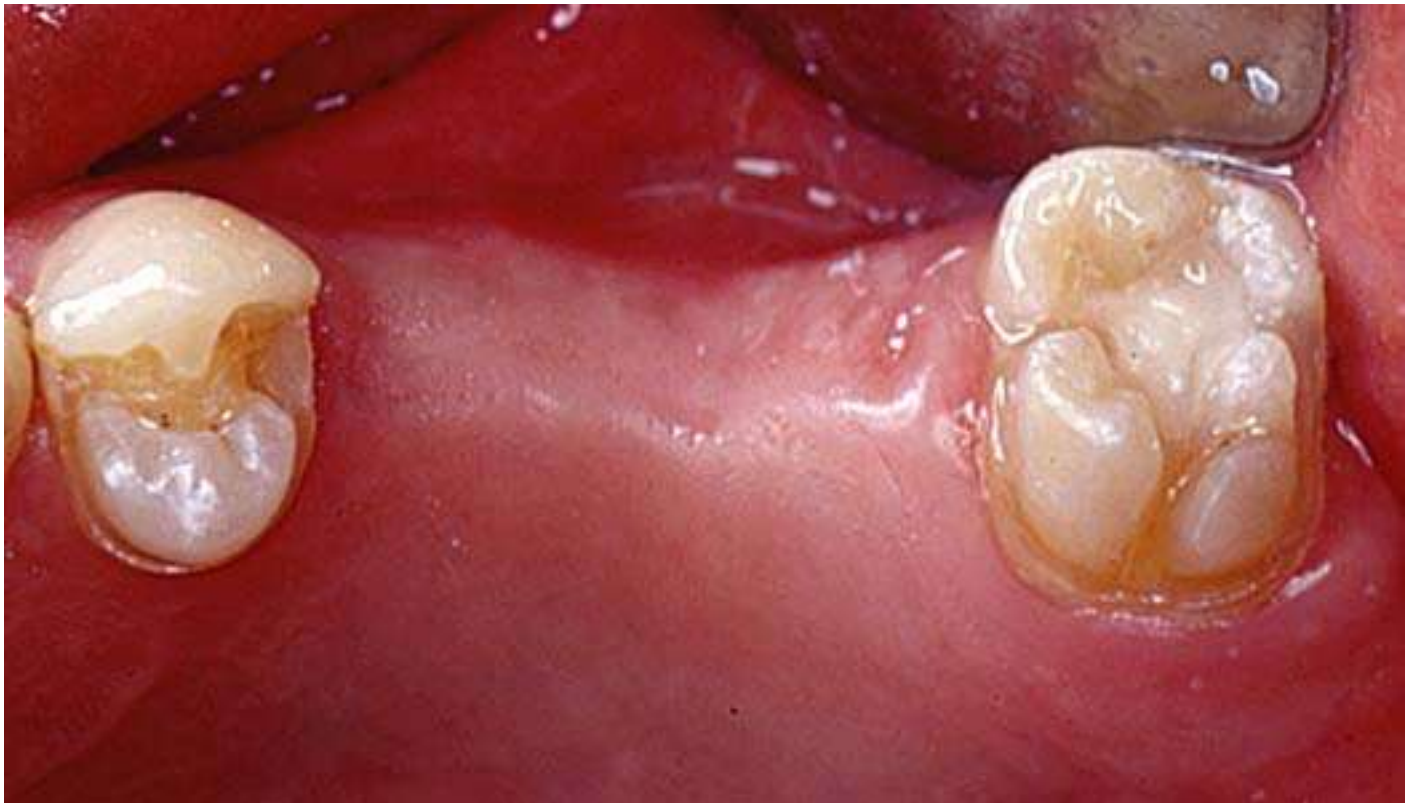
AcuHand System Applications

- Enhance manual skill and upgrade the overall quality of dentistry performed
- Complete parallelism in crown and bridge preparation
- Enhancement of veneer installation
- Optimal and accurate positioning of implants

Limited bridge preparation



Preparation of teeth with different inclination



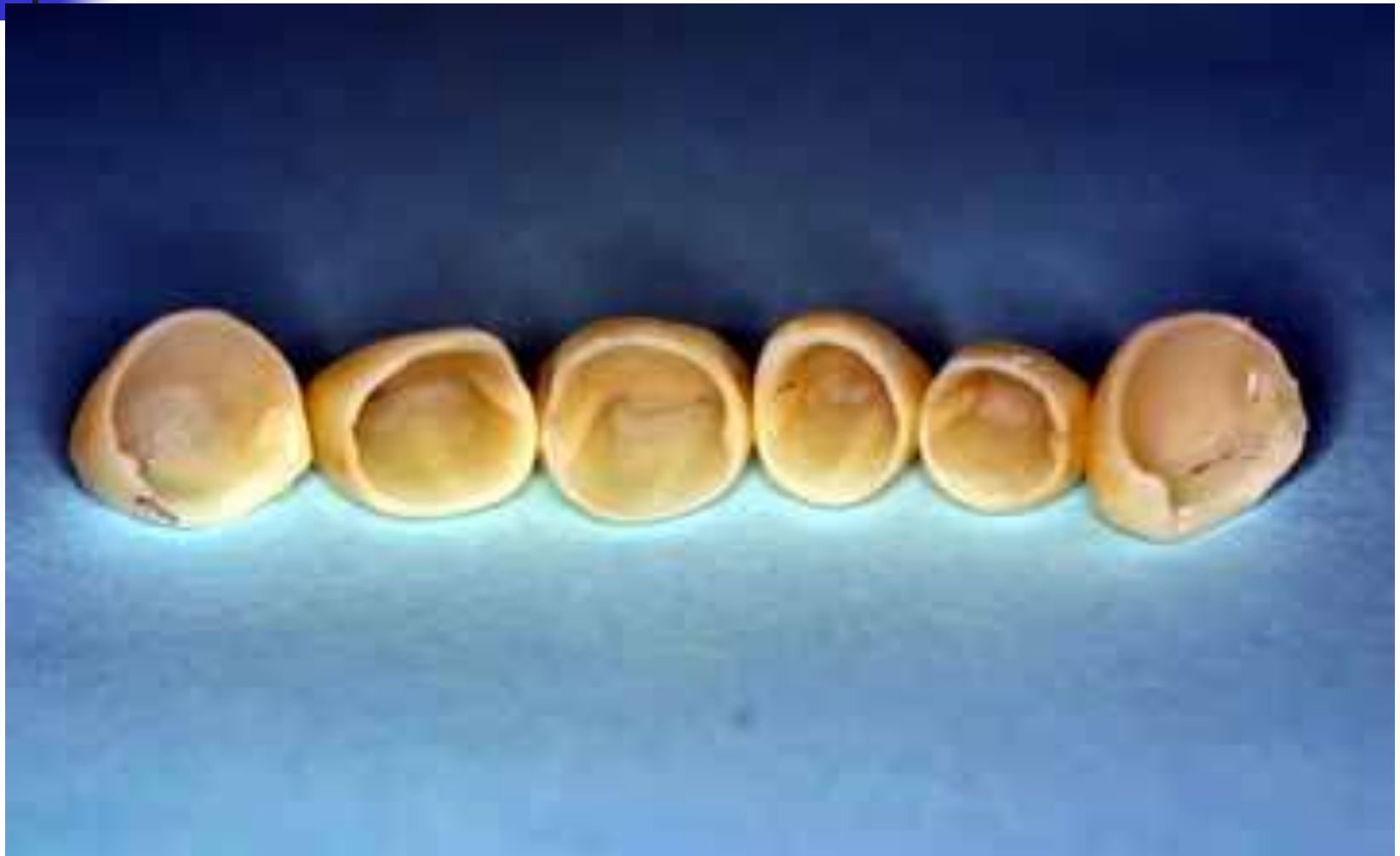
Preparation & Bridge



Preparation for laminate veneers



Veneer tongue and groove interface



Preparation for bridge and veneer combination



